

# Toulip

tavolino/occasional table  
design: Alberto Turolo



# Toulip

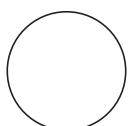
tavolino / occasional table  
design: Alberto Turolo



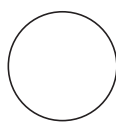
itf Design  
Matera since 1978 - www.itfdesign.com



45



49



40

## Imballo / Packaging

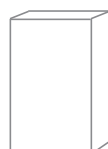
D40 h45



1 x 1 box  
Kg. 4.0

Cbm 0,091

D49 h45



1 x 1 box  
Kg. 4.2

Cbm 0,13

Il tavolino Toulip continua la dialettica tra materiali che è alla base della filosofia progettuale della collezione.

Il basamento in legno massello con gambe quadrate sostiene un piano proposto in MDF rivestito da lastra in ceramica da 3.5 millimetri o laccato.

La base è disponibile in faggio laccato o frassino naturale.

Toulip occasional table features the same link among materials according to the collection concept.

The wooden base with square legs support a MDF top stratified with ceramic 3.5 millimeters or lacquered.

The base is available in solid ash or in beech wood lacquered in different colours.

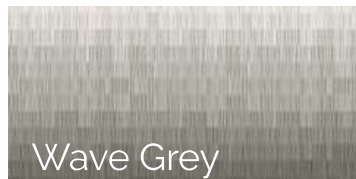
# Finiture / Finishes

## Piano / Top

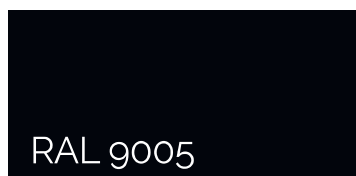
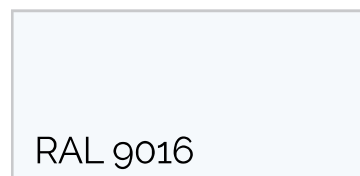
### Stone 3.5



### Wave 3.5

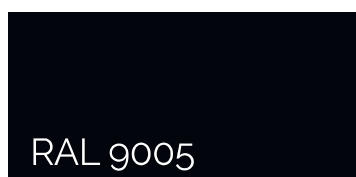
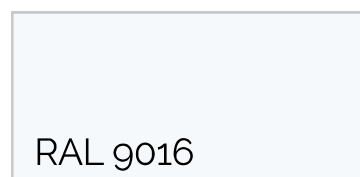


## Laccato / Lacquered



## Gambe / Legs

### Laccato / Lacquered



## Essenze / Essences

